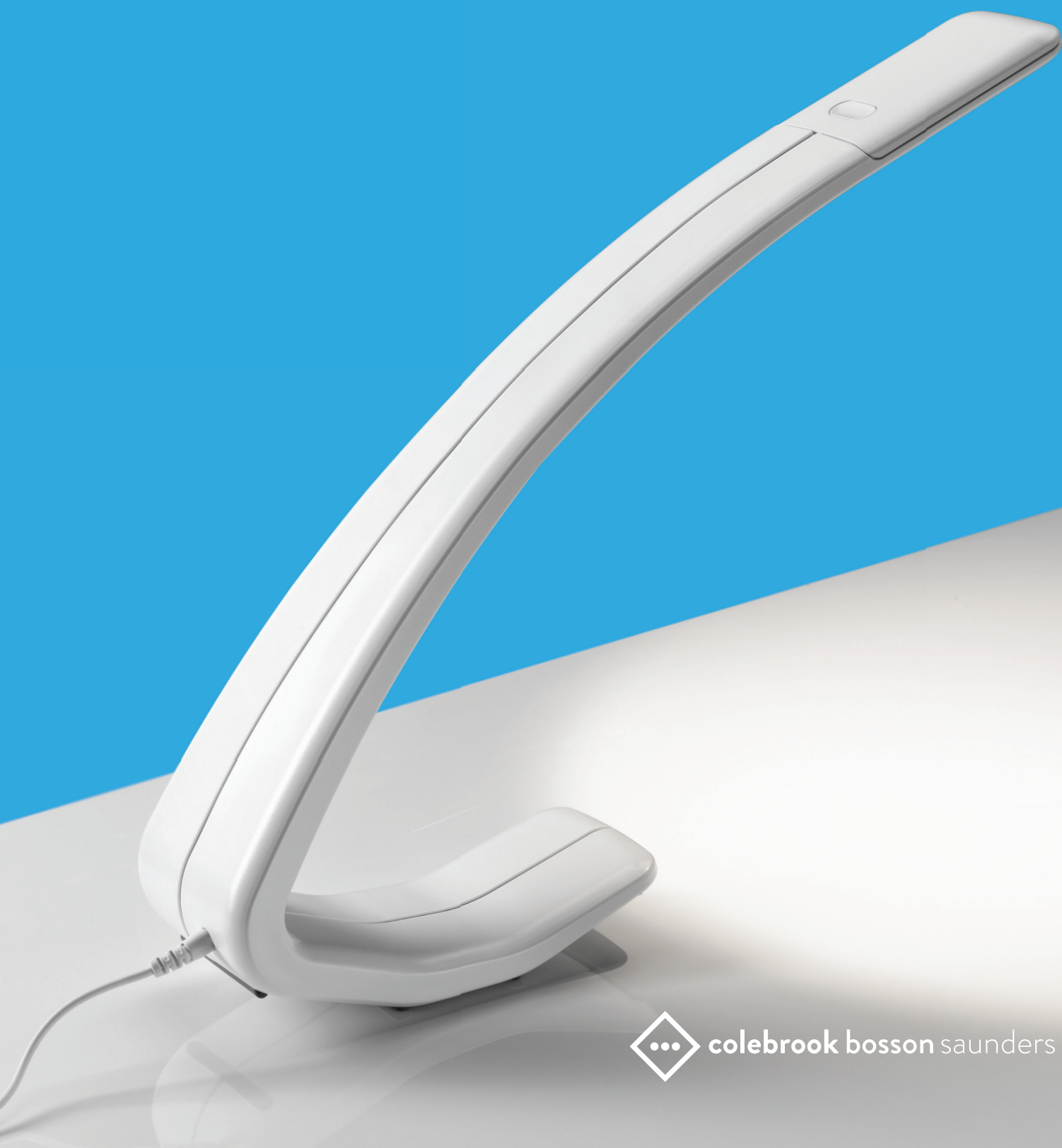


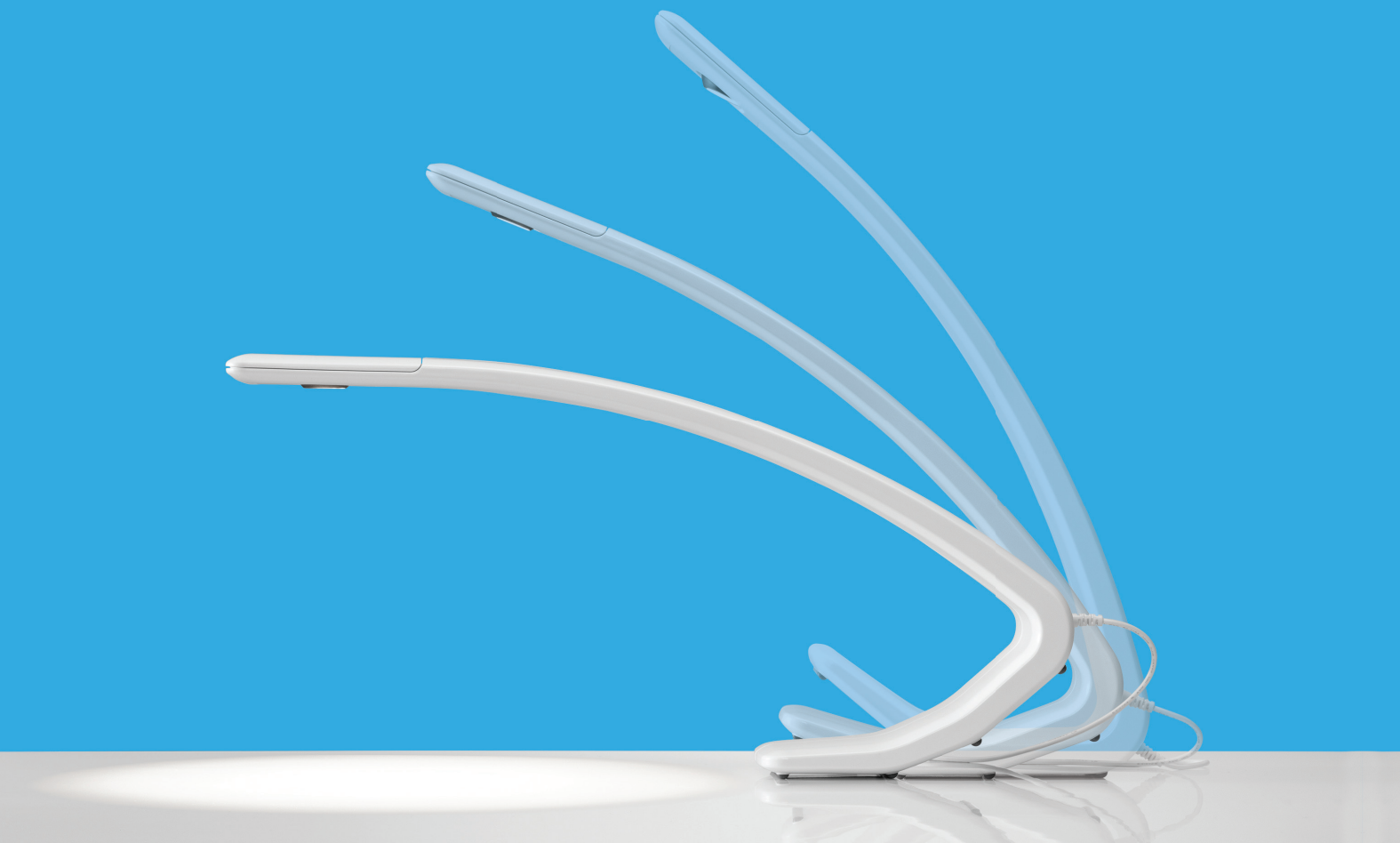
Meet Amble.

amble

BY
LIGHTCORP



colebrook bosson saunders



Amble is a fully adjustable task light of single-piece construction that redefines the genre. It is stylish and simple with only one moving part to create a minimalist aesthetic.

**MINIMALIST DESIGN
FOR MAXIMUM EFFECT**

Through ingenious design, Amble offers three lighting positions, all helping the user's visual focus. At its tallest position, Amble provides ambient light that helps reduce eyestrain in everyday office environments. Ideal for tasks such as drafting and illustration, or reading oversized printed materials, Amble pivots nimbly to give an even, luminous glow.

When fashioned into its intermediate posture, Amble shines as a multi-purpose task light. Its large sphere of radiant light is perfect for general office tasks including computing, reading and writing.

Tilted to its lowest point, Amble provides concentrated light when needed, such as reading fine print or performing fine motor tasks. When precision is critical, Amble bends to meet your lighting needs.

**LIGHTS SPACE,
SAVES SPACE**

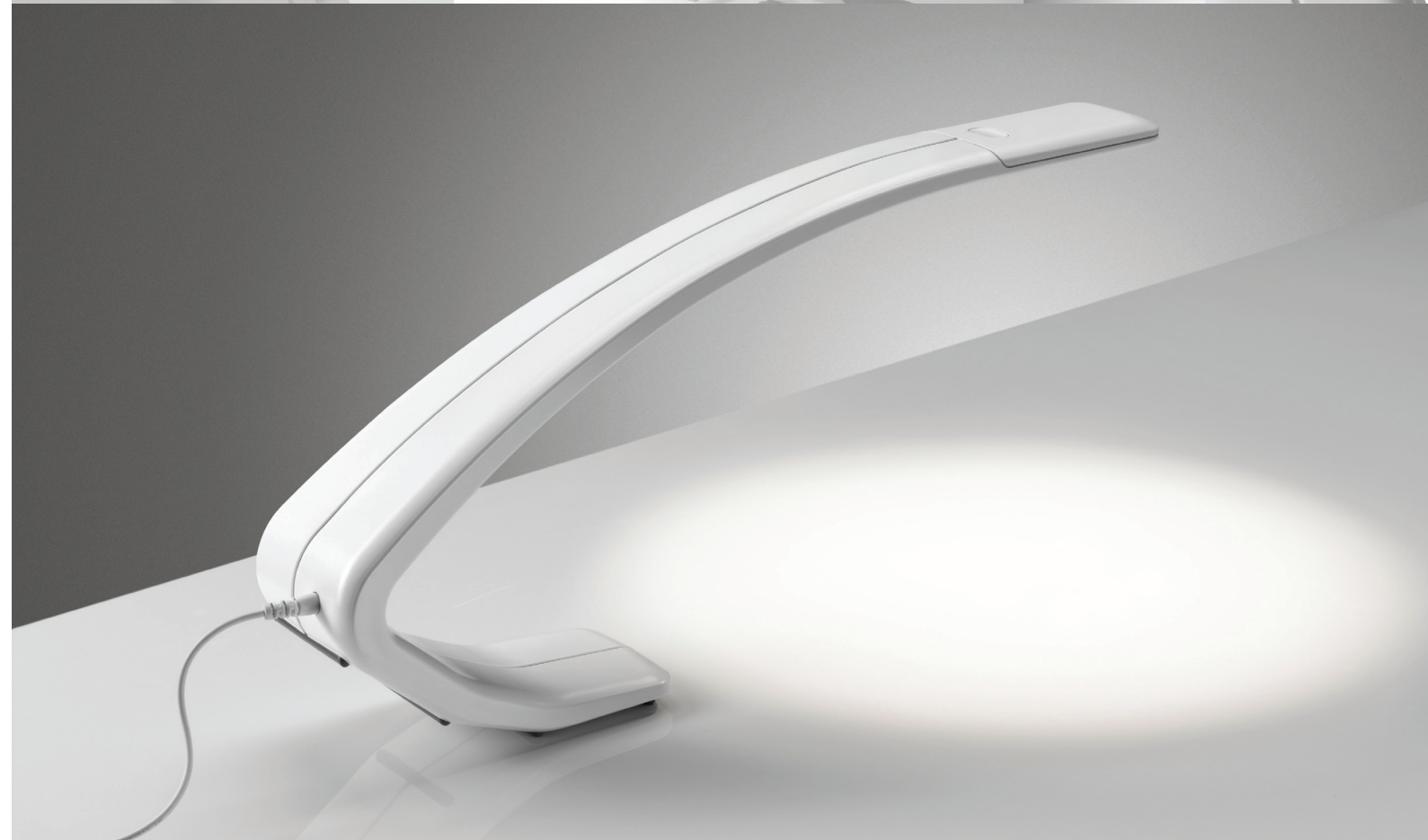
Space comes at a premium in the modern workplace, and Amble's compact footprint reduces clutter, it doesn't take up space, it lights space.

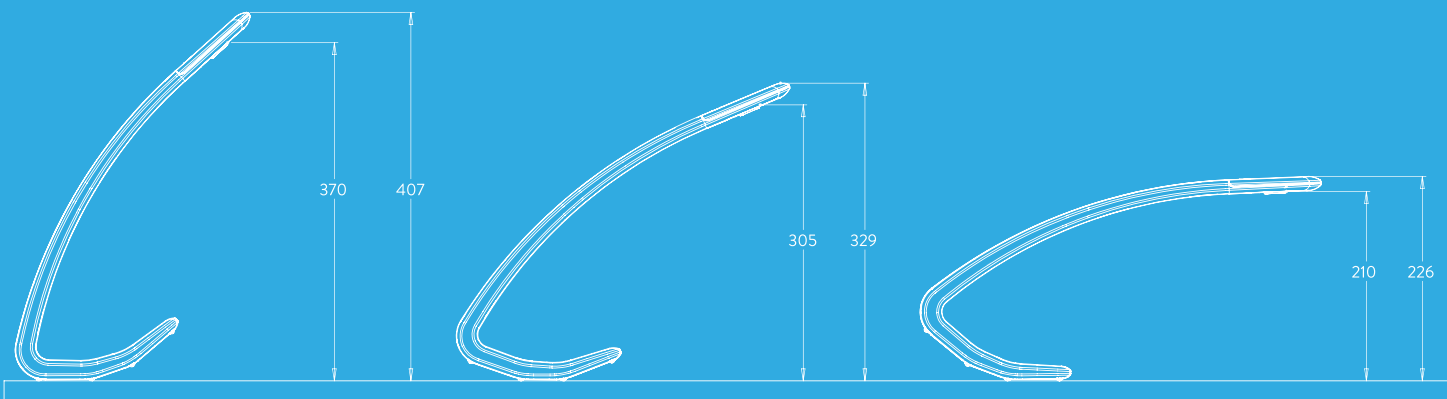
**MAKING LIGHT OF
WORKPLACE ERGONOMICS**

Amble's ergonomic adjustability promotes wellbeing in the workplace. Its only moving part is a self-articulating lightshade that moves automatically with the position of the light. And from clarified focus to ambient lighting, Amble can illuminate open plan spaces for people who aren't near a natural light source.

LIGHTING THE FUTURE

To help minimise energy use, Amble's touch-dimmable, 206 lumen LED light automatically turns off after 10 hours of inactivity.





OVERVIEW

- Ingenious single-piece design swivels, slides and tilts - with no articulating joints
- High power, long life LED light source
- 'Powersave' auto-off after 10 hours of inactivity
- Overall dimensions 442mm x 221mm x 84mm
- Available in white

